



HIRSCHMANN

A **BELDEN** BRAND

User Manual

Basic Configuration

HiProvision Add-on: Generic Reporting Engine



The naming of copyrighted trademarks in this manual, even when not specially indicated, should not be taken to mean that these names may be considered as free in the sense of the trademark and tradename protection law and hence that they may be freely used by anyone.

© 2019 Hirschmann Automation and Control GmbH

Manuals and software are protected by copyright. All rights reserved. The copying, reproduction, translation, conversion into any electronic medium or machine scannable form is not permitted, either in whole or in part. An exception is the preparation of a backup copy of the software for your own use.

The performance features described here are binding only if they have been expressly agreed when the contract was made. This document was produced by Hirschmann Automation and Control GmbH according to the best of the company's knowledge. Hirschmann reserves the right to change the contents of this document without prior notice. Hirschmann can give no guarantee in respect of the correctness or accuracy of the information in this document.

Hirschmann can accept no responsibility for damages, resulting from the use of the network components or the associated operating software. In addition, we refer to the conditions of use specified in the license contract.

You can get the latest version of this manual on the Internet at the Hirschmann product site (www.doc.hirschmann.com).

Hirschmann Automation and Control GmbH
Stuttgarter Str. 45-51
72654 Neckartenzlingen
Germany

Contents

1.	INTRODUCTION	4
1.1	Description.....	4
1.2	Supported Hardware, Firmware, Software	4
1.3	Manual References.....	4
2.	INSTALLATION/ACTIVATION (ADD-ONS TILE)	5
2.1	Prerequisite.....	5
2.2	Activate.....	5
3.	REPORT HANDLING (INVENTORY TILE).....	7
3.1	General	7
3.2	Define/Configure Report.....	8
3.3	Generate (=Run) Report.....	9
3.4	View/Download Report	10
4.	ABBREVIATIONS	10

List of figures

Figure 1 General: Reporting Engine	4
Figure 2 Dashboard: Inventory/Add-ons Tile	5
Figure 3 Enable Reporting Engine	5
Figure 4 Reporting Engine (=REP) Process in Servers Tab.....	6
Figure 5 General Report Flow.....	7
Figure 6 Report Wizard: Report Type Selection	8
Figure 7 Report Wizard: Filtering	9
Figure 8 Report Wizard: Report Template and Output Formats.....	9

List of Tables

Table 1 Manual References	4
Table 2 Report Menu Buttons	7
Table 3 Report Status	9

1. INTRODUCTION

1.1 Description

This document is valid as of Dragon PTN R4.0DR. This add-on provides the possibility to generate different detailed Dragon PTN reports (template based), exported in different output formats.

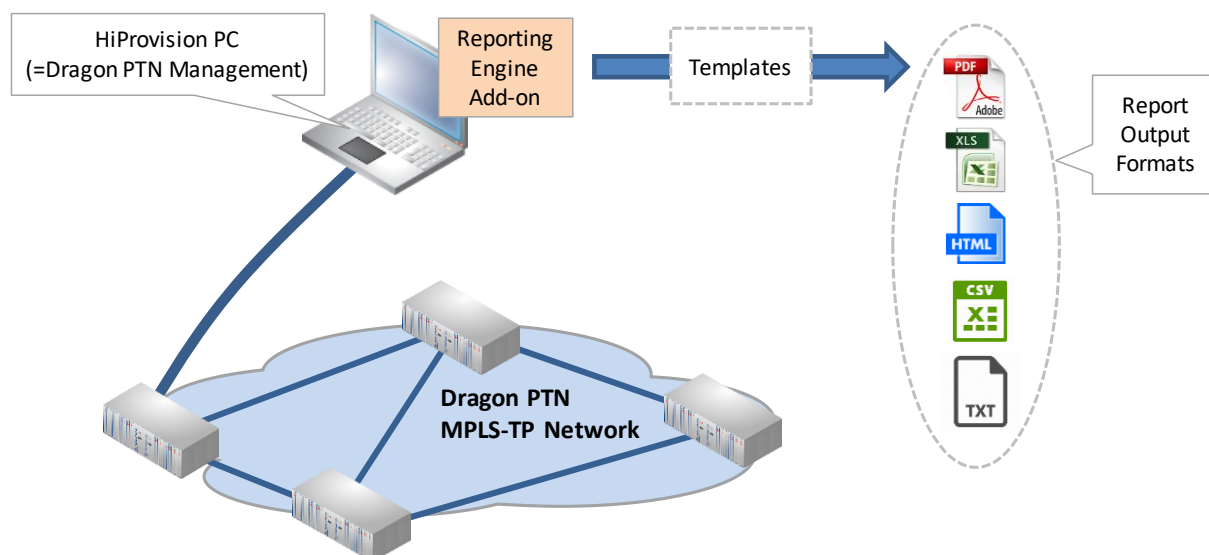


Figure 1 General: Reporting Engine

1.2 Supported Hardware, Firmware, Software

The supported hardware, firmware and software within this Dragon PTN release can be found on the Portal <https://hiprovision.hirschmann.com> via Shortcuts → Downloads.

1.3 Manual References

Table 1 is an overview of the manuals referred to in this manual. All these manuals can be found in the HiProvision Help function as well.

Table 1 Manual References

Ref.	Manual	Title
[1]	IG_Dragon-PTN_Installation-and-Operation_02_1019_en.pdf	Dragon PTN Installation and Operation
[2]	UM_BasicConfig_Dragon-PTN_and_HiProvision-Operation_Rel_4-0DR_1019_en.pdf	Dragon PTN and HiProvision Operation
[3]	UM_BasicConfig_HiProvision-Alarms-List_Rel_4-0DR_1019_en.pdf	HiProvision Alarms List

2. INSTALLATION/ACTIVATION (ADD-ONS TILE)

2.1 Prerequisite

A 'Reporting Engine Add-on' voucher must be purchased first. Once it has been purchased, install a license pack with this voucher on the HiProvision PC. See chapter 'SERIAL KEY / VOUCHERS / LICENSE PACK' in the 'Dragon PTN and HiProvision Operation' manual in Ref.[2] in Table 1. to generate and install the license pack. It can be verified in HiProvision whether a Reporting Engine license has been installed via Dashboard → Licenses: Voucher type = Reporting Engine. 'Vouchers available' must be at least one.

2.2 Activate

1. The Reporting Engine add-on is by default available in HiProvision and can be found via Dashboard → (Tools) Add-ons to activate it. Later on, the Inventory Tile will be used as well to configure/generate the reports.



Figure 2 Dashboard: Inventory/Add-ons Tile

2. Click the Reporting Engine tab;

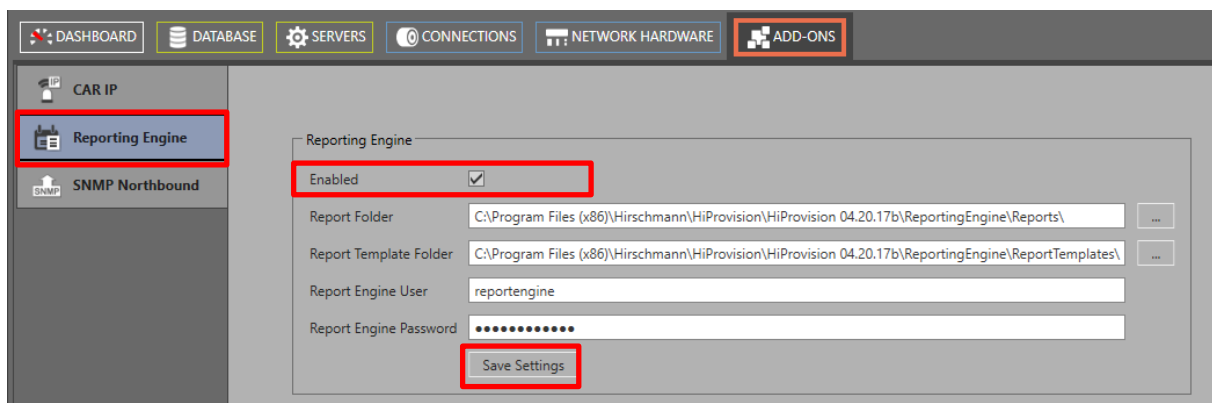


Figure 3 Enable Reporting Engine

3. Check the Enabled checkbox;
4. Report Folder: indicates the folder in which the reports are generated and saved.

NOTE: It is advised to change this folder to a folder which is HiProvision version independent. As a result, you will still see the generated reports if you upgrade your HiProvision software to a higher version.

5. Report Template Folder: indicates the folder in which the Report Templates are installed.

NOTE: If you want to reuse older templates from a previous HiProvision version, just copy paste the older templates into this new folder.

6. Reporting Engine User / Password (default = **reportengine**): by default the user/password **reportengine/reportengine** is filled out. The **reportengine** user is by default available as administrator in the Users tile. Any other user/password in the Users tile can be filled out as reporting engine user/password. CAUTION: the Report Engine User must be a different user than the one used for logging in in HiProvision. If you use the same users, the add-on user could log out the HiProvision login user.
7. Click the Save Settings button;
8. When the HiProvision servers were already started, a pop-up requests to restart the servers. If the servers were not started yet, just start the servers. (Re)start the HiProvision servers via Dashboard → Servers → (Stop) / Play buttons;
9. The (re)start of the servers will check the availability of a valid Reporting Engine license and starts up the Reporting Engine ('REP') process if the license is valid. The servers will not start without a valid license.
10. If the 'REP' process is in the Started state, the Reporting Engine add-on is up and running. It acts according the configured settings Figure 3.

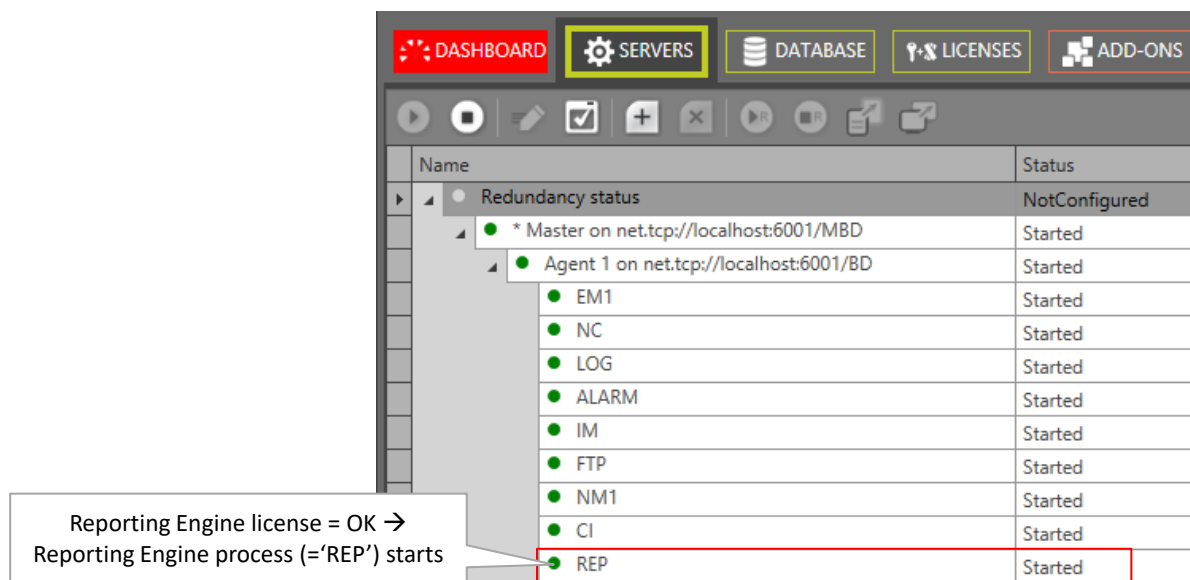


Figure 4 Reporting Engine (=REP) Process in Servers Tab

3. REPORT HANDLING (INVENTORY TILE)

3.1 General

Report creation and generation must be done in the Dashboard → (Tools) Inventory tile.
Follow the steps below:

- ▶ (see §3.2) Step 1: Define/Configure the report: type, filtering, output format...;
- ▶ (see §3.3) Step 2: Generate (=run) the desired report;
- ▶ (see §3.4) Step 3: View/download the generated report;

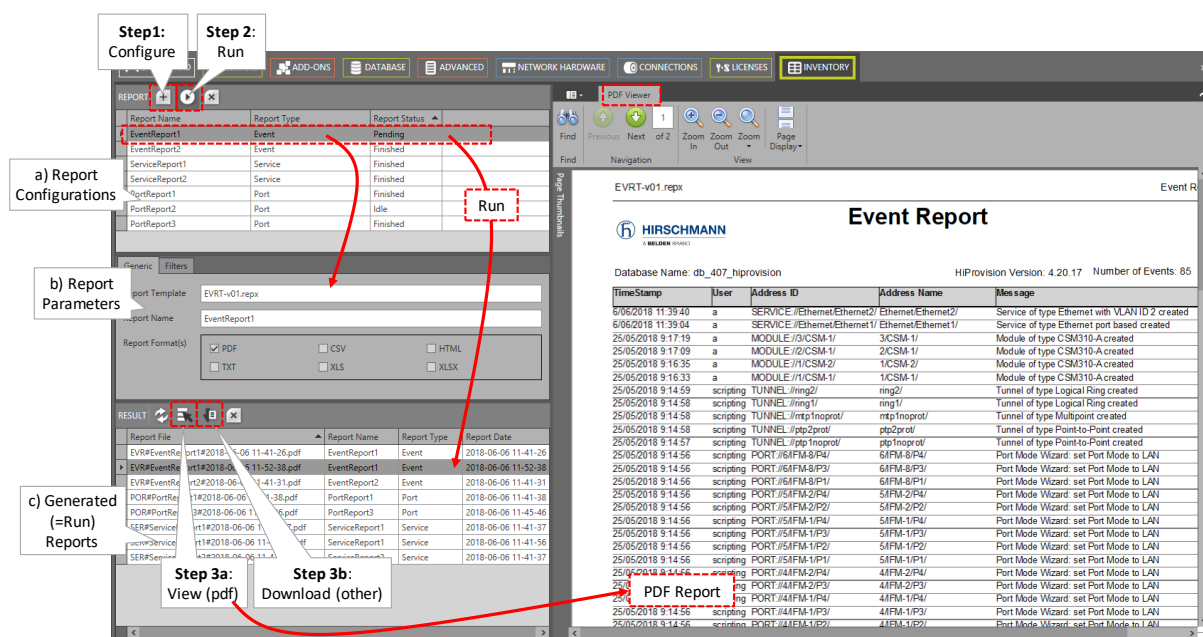


Figure 5 General Report Flow

Table 2 Report Menu Buttons

Button	Short Description
REPORT	
	Define/configure a report: select report type, filtering, output format...
	Run the selected report. This will generate the report in the desired output format. The generated reports will be saved in the Reports folder in Figure 3.
	Delete the selected defined/configured report, it does not delete the linked generated reports (=results).
RESULT	
	Refresh button.
	View the selected pdf report in the PDF VIEWER on the right-hand side. If a report file different from *.pdf is selected, this button will be greyed out, and the report must be viewed after downloading the file via the button.
	Download the selected report and view it locally.
	Delete the selected generated report. Multiple select (via CTRL + SHIFT) and deletion is possible as well. Deleting the generated report from the list also deletes the physical output file from the Reports folder.

3.2 Define/Configure Report

1. Click the Report  button to open the Report wizard:

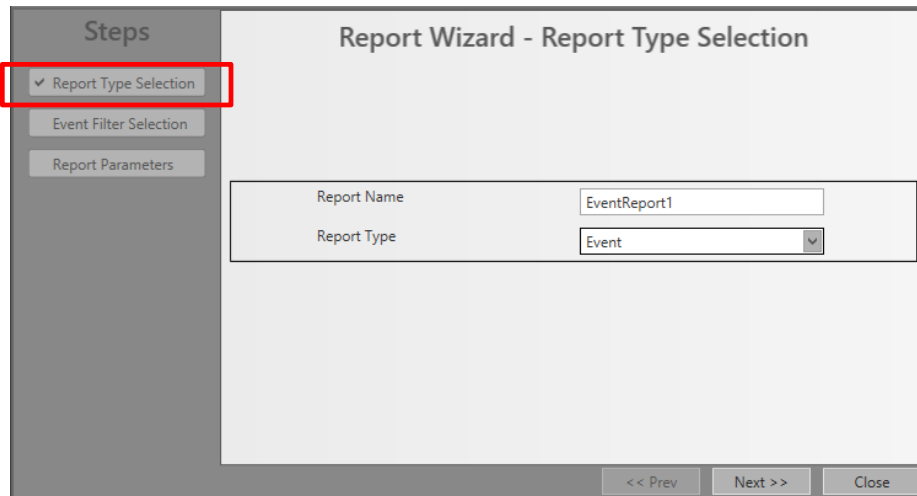


Figure 6 Report Wizard: Report Type Selection

2. Report Type Selection:
 - ▶ Fill out a Report Name;
 - ▶ Select one of the Report Types below and click Next>>:
 - ▶ Event: Reports all the events that have occurred in HiProvision;
 - ▶ Timed Event: Reports only the events of the last 24 hours;
 - ▶ Fiber Optics: list all the optical ports (=port with SFP/XFP) from the live network;
 - ▶ Hardware: lists all the nodes, Interface Modules, ports (depending on the selected template) and its status indicated in color. If HiProvision is offline, the color will be grey. If HiProvision is online, the status color indicates the severity color of the network element;
 - ▶ Link: lists all the links including the bandwidth, occupancy, tunnels, services...;
 - ▶ Port: lists all the ports with their most important properties;
 - ▶ Service: lists all the services (Ethernet or Circuit Emulation), with more less details depending on the selected template;
 - ▶ Tunnel: lists all the tunnels, with more or less details depending on the selected template;
 - ▶ SyncE: lists all the SyncE recovery ports and their SyncE properties and status;
 - ▶ Software: lists all the versions and editions (active version, backup version, hardware edition,) of the Interface Modules that are installed in the selected nodes.
3. Filtering: The second page in the wizard allows to setup a filter for your report. Depending on the selected Report Type, the filter can differ a little bit. Configure the desired filtering and click Next>>;

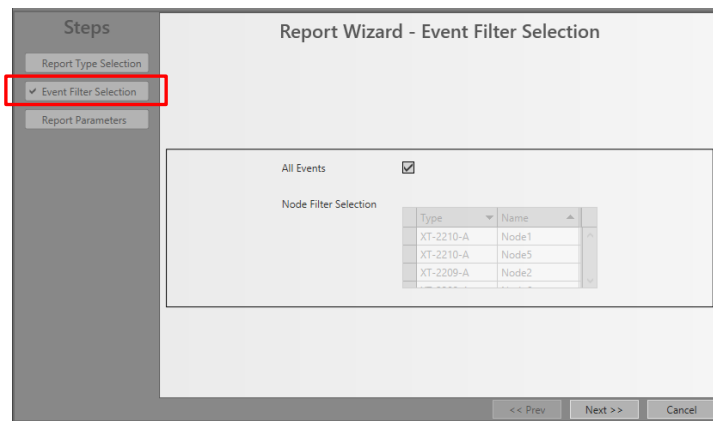


Figure 7 Report Wizard: Filtering

4. Report Parameters:

- ▶ Select a Report Template from the drop-down list;
- ▶ Select one or more desired Report Formats: PDF (=default)/CSV/HTML/TXT/XLS/XLSX;
- ▶ Click the Finish button. After clicking this button, the report will be configured, but not yet generated.

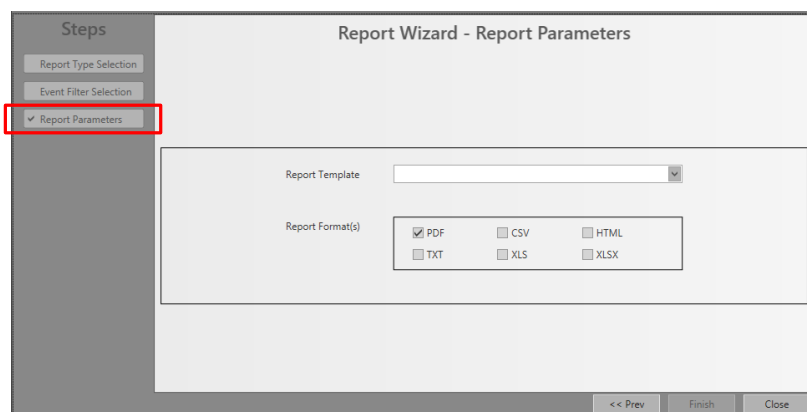


Figure 8 Report Wizard: Report Template and Output Formats

5. Customized logo (optional): You can create your own custom logo on the top-right hand corner of the reports with respect to the conditions below:

- ▶ file name: logoright.png
- ▶ file type: png
- ▶ preferred aspect ratio (width*height) 2:1
- ▶ preferred size: 140px*70px
- ▶ must be placed in the ReportTemplates folder: ReportTemplates\logoright.png

3.3 Generate (=Run) Report

1. Select the defined/configured report in the REPORT list, and click the play button.
2. The 'Report Status' field changes into Pending. The table below lists all the possible report status values.



Table 3 Report Status

Value	Description
-------	-------------

Normal Flow: Idle > Pending > (Running) > Finished	
Idle	The report has been defined/configured but has not been generated (=run) yet in this HiProvision session.
Pending	The report is being generated right now, the processing of the report is ongoing. The report will be finished soon. For big reports, the status turns into 'Running'. For smaller reports, the status will almost immediately turn into 'Finished'.
Running	Only visible for big reports that take longer to generate. A big report is being generated right now, the processing of the report is ongoing. The report will be finished soon. This status should turn into the 'Finished' status.
Finished	The report has been generated successfully. It can be viewed/downloaded in the RESULT section.
Failed	The generation of the report failed, no report has been generated. Possible cause(s): - invalid Report Engine User/Password in Figure 3. Make sure that the filled out user and password exist in the Users tile; - Disk full: minimum 100MB empty disk space is required.

- Once the generation has finished, the generated reports in all the selected output formats will be listed in the RESULT list.

3.4 View/Download Report

- Select the desired report in the RESULT section and click the  button to view a selected pdf in the PDF Viewer (right-hand section) or click the  button to download the report (any output format).

4. ABBREVIATIONS

CSV	Comma Separated Value
SFP	Small Form Factor Pluggable
XFP	10 Gigabit Small Form Factor Pluggable Module