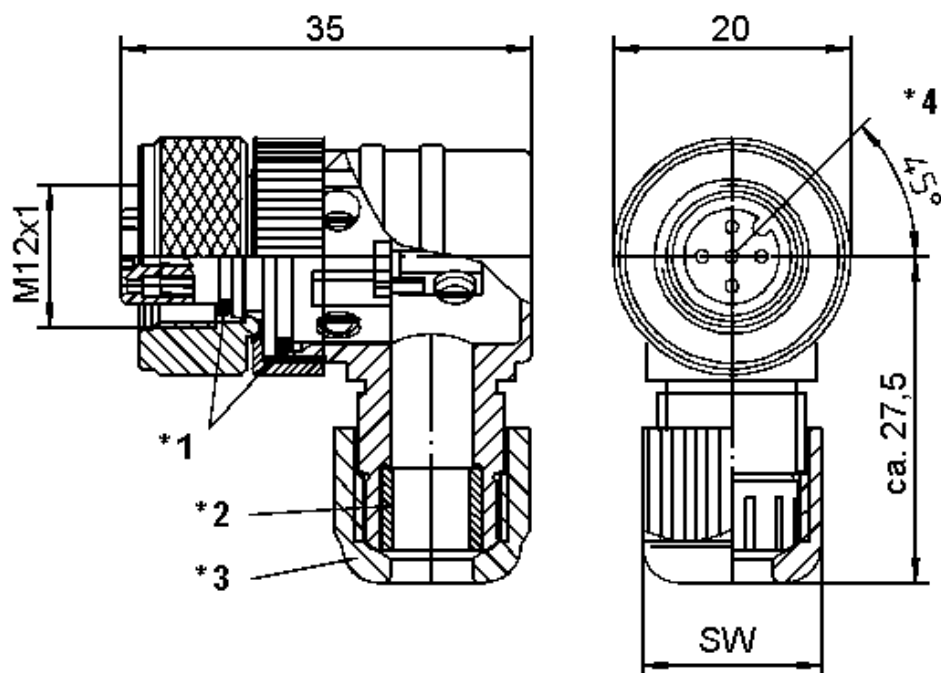
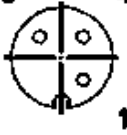


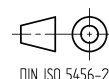


RoHS ✓



Typ/ type	Polzahl/ number of poles	Kabeldurchlass/ cable outlet	SW
RKCW 3/7	3		Ø 3 - 6,5 mm 15
RKCW 3/9			Ø 4 - 8 mm 19
RKCW 4/7	4		Ø 3 - 6,5 mm 15
RKCW 4/9			Ø 4 - 8 mm 19
RKCW 5/7	5		Ø 3 - 6,5 mm 15
RKCW 5/9			Ø 4 - 8 mm 19

The information/details in this datasheet merely contain general descriptions or performance factors which, when applied in an actual situation, do not always correspond with the described form, and may be amended by way of the further development of products. The desired performance factors shall only be binding if these are expressly agreed on conclusion of the contract.



Product description

Type	RKCW
Type of contacts	female, screw terminal
Number of contacts	3/ 4/ 5
Cable gland	PG 7/ PG 9
Conductor size	max. 0,75 mm ²
Construction type	A-coded
Color housing	black
Color contact bearer	black

Technical data

Rated voltage	3-, 4-pins: 240V AC/DC 5-pins: 50 V AC, 60 V DC
Rated current *	4 A
Rated impulse voltage	2kV eff./ 60s (5-pin type 1,5kV eff./ 60s)
Pollution degree	3 acc. to DIN EN 60664-1 (VDE 0110-1)
Contact resistance	≤ 5 mOhm
Insulation resistance	> 10 ⁹ Ohm
Type of connection	screw terminal

* Notice derating

Materials

Contact bearer	PBT
Housing	PBT
Contact	CuZn
Contact plating	pre-coppered, CuSnZn
Knurled nut	CuZn, nickel-plated
Coupling nut	PBT
Cup nut	PBT
Gasket(s)	FKM

Environmental conditions

Protection class (IEC 60529) *	IP67
Temperature range (connector)	-25°C to +90°C, notice Derating

Good chemical resistance.

The resistance has to be checked in individual cases.

* only if mounted and locked in combination with Hirschmann / Lumberg connector.

Cutline

*1) O-ring

*2) Gasket

*3) Cap nut

*4) Insert rotatable through 90°.

Do not connect or disconnect under load.

Standard products

Artikel-No.	Type
000-011-256	RKCW 4/3/7
000-011-257	RKCW 4/3/9
000-011-258	RKCW 4/7
000-011-259	RKCW 4/9
000-011-260	RKCW 5/7
000-011-261	RKCW 5/9
000-013-588	RKCW 4/7 P2
000-013-591	RKCW 4/7 P5
000-013-592	RKCW 4/7 P1
000-013-620	RKCW 5/7 P1
000-013-628	RKCW 5/7 P4
000-013-629	lö RKCW 5/7 P5
000-079-139	RKCW 5/7 P2
000-079-142	RSCW 4/7 P3