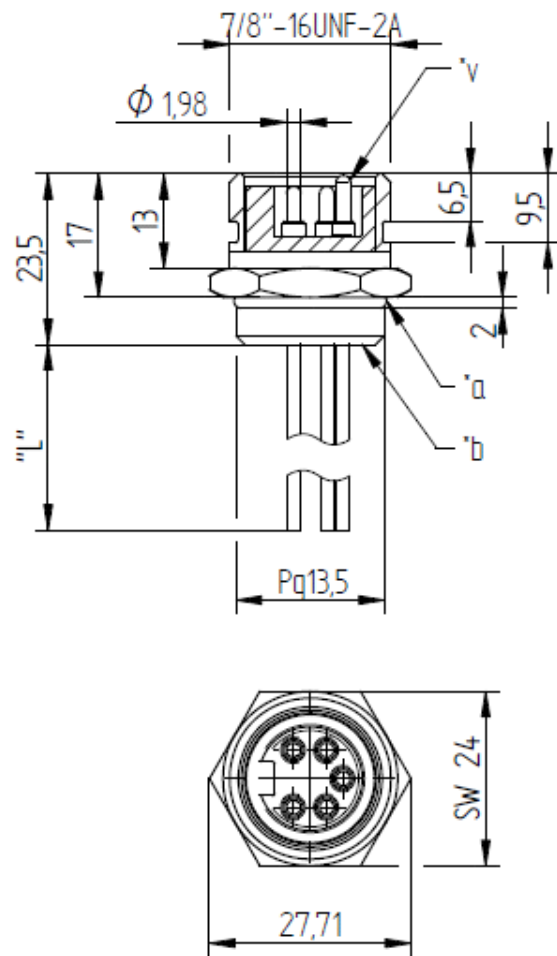
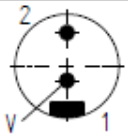
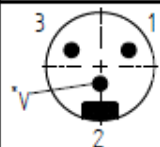
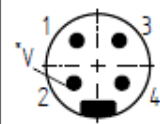
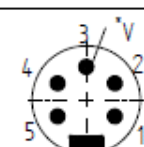
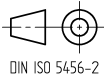


RoHS  



Typ/ type	Standard - Kontaktbelegung/ standard contact assignment			
	Polzahl/ number of poles	Farbkennung/ colour code		
RSF 20/13,5..	2		1 = braun / brown	
			2 = blau / blue	
RSF 30/13,5..	3		1 = braun / brown	1 = braun / brown
			2 = grün-gelb / gree-yellow	2 = schwarz / black
			3 = blau / blue	3 = blau / blue
RSF 40/13,5..	4		1= braun / brown	
			2 = weiß / white	
			3 =blau / blue	
			4 = schwarz / black	
RSF 50/13,5..	5		1 = schwarz / black	
			2 = blau / blue	
			3 = grün-gelb / green-yellow	
			4 = braun / brown	
			5 = weiß / white	

The information/details in this datasheet merely contain general descriptions or performance factors which, when applied in an actual situation, do not always correspond with the described form, and may be amended by way of the further development of products. The desired performance factors shall only be binding if these are expressly agreed on conclusion of the contract.



Product description

- receptacle connector for front mounting
- thread chassis side PG 13,5

Type	RSF 20..30..40..50/13,5
Type of contacts	male
Number of contacts	2, 3, 4, 5
Construction type	FM with PG 13,5 thread

Technical data

Rated voltage	240 V AC/DC
Rated current *	2-3 pin: 12 A at 40°C 4-5 pin: 9 A at 40°C
Rated impulse voltage	2-3 pin: 2 kV / 60 s 4-5 pin: 1,5 kV / 60 s
Pollution degree	3 acc. to DIN EN 60664-1 (VDE 0110-1)
Contact resistance	≤ 5 mOhm
Insulation resistance	> 10 ⁹ Ohm

* Notice derating

Materials

Housing	CuZn, nickel-plated
Contact bearer	TPU
Contact	CuZn
Contact plating	Cu/Au
O-ring	Neoprene

Environmental conditions

Protection class (IEC 60529) *	IP68 (1h, 10 bar)
Temperature range	-25°C to +90°C, notice derating

Good chemical resistance.

The resistance has to be checked in individual cases.

* only if mounted and locked in combination with Hirschmann / Lumberg connector.

max. locked torque 1Nm

Cutline

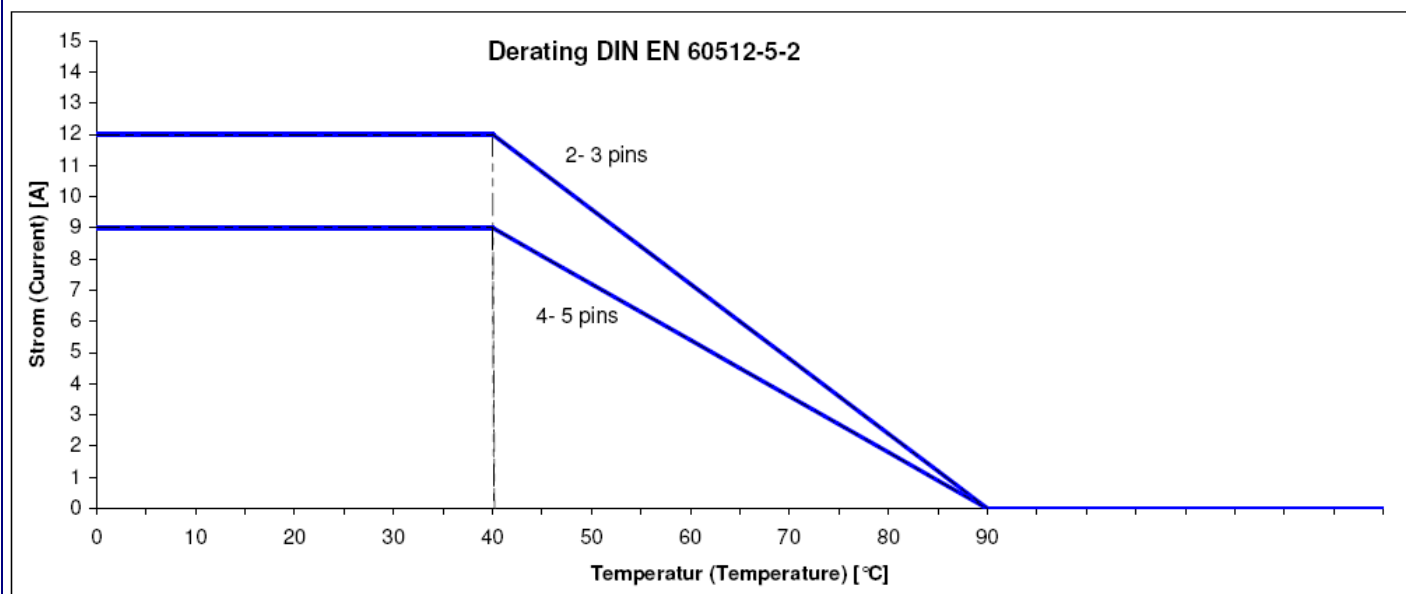
*a o-ring enclosed separately

*b terminal area potted with epoxy

*v leading contact 1.5 mm

"L" = standard length of stranded wire

Do not connect or disconnect under load.



Standard products

Artikel-No.	Type
000-011-618	RSF 20/13,5-03
000-011-624	RSF 30/13,5-01
000-011-625	RSF 30/13,5-05
000-011-631	RSF 40/13,5-02
000-011-636	RSF 50/13,5-04