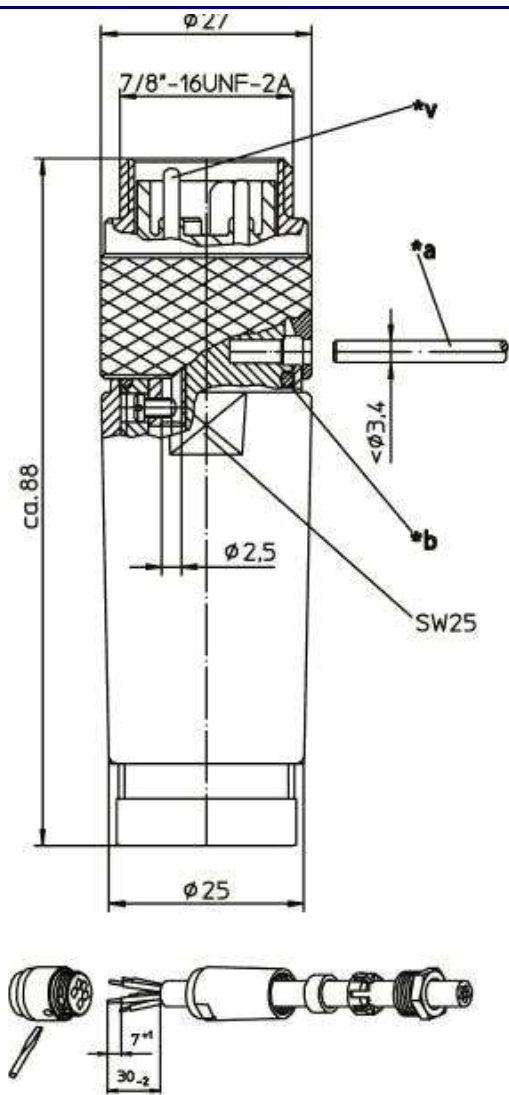

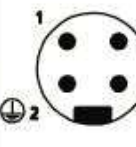



RoHS ✓



Typ	Polzahl	Verschraubung (Kabeldurchmesser)
RSC 30 / ...	3 	Pg 9 (ø 6 - 8 mm) Pg 11 (ø 8 - 10 mm) Pg 13,5 (ø 10 - 12 mm) Pg 16 (ø 12 - 14 mm)
RSC 40 / ...	4 	Pg 9 (ø 6 - 8 mm) Pg 11 (ø 8 - 10 mm) Pg 13,5 (ø 10 - 12 mm) Pg 16 (ø 12 - 14 mm)
RSC 50 / ...	5 	Pg 9 (ø 6 - 8 mm) Pg 11 (ø 8 - 10 mm) Pg 13,5 (ø 10 - 12 mm) Pg 16 (ø 12 - 14 mm)

The information/details in this datasheet merely contain general descriptions or performance factors which, when applied in an actual situation, do not always correspond with the described form, and may be amended by way of the further development of products. The desired performance factors shall only be binding if these are expressly agreed on conclusion of the contract.



Product description

Description	7/8" male connector with threaded joint
Type	Field-assembled
Type of contacts	RSC
Number of contacts	male, screw terminal
Cable gland	3, 4, 5
Order No	PG 9, PG 11, PG 13,5 and PG 16, see standard products , see standard products

Technical data

Rated current *	3 pins: 12 A 4 - 5 pins: 9 A
Rated impulse voltage	3 pins: 2,5 kV 4 - 5 pins: 1,5 kV
Rated voltage	240 V
Insulation resistance	> 10 ⁹ Ohm
Contact resistance	< 5 mOhm
Pollution degree	3 acc. to DIN EN 60664-1 (VDE 0110-1)
Type of connection	screw terminal
Suitable cables	max. AWG 15
Suitable cables	see table page 1

* Notice derating

Materials

Contact bearer	PA6.6, black
Housing	TPU, self-extinguishing, black
Contact	CuZn
Contact plating	gold-plated
Knurled screw	Al, anodized
Screw(s)	Steel, zinc-plated and chromalized
O-ring	NBR

Environmental conditions

Protection class (IEC 60529) *	IP67
Temperature range (connector)	-40°C to +90°C, notice Derating

Good chemical resistance.

The resistance has to be checked in individual cases.

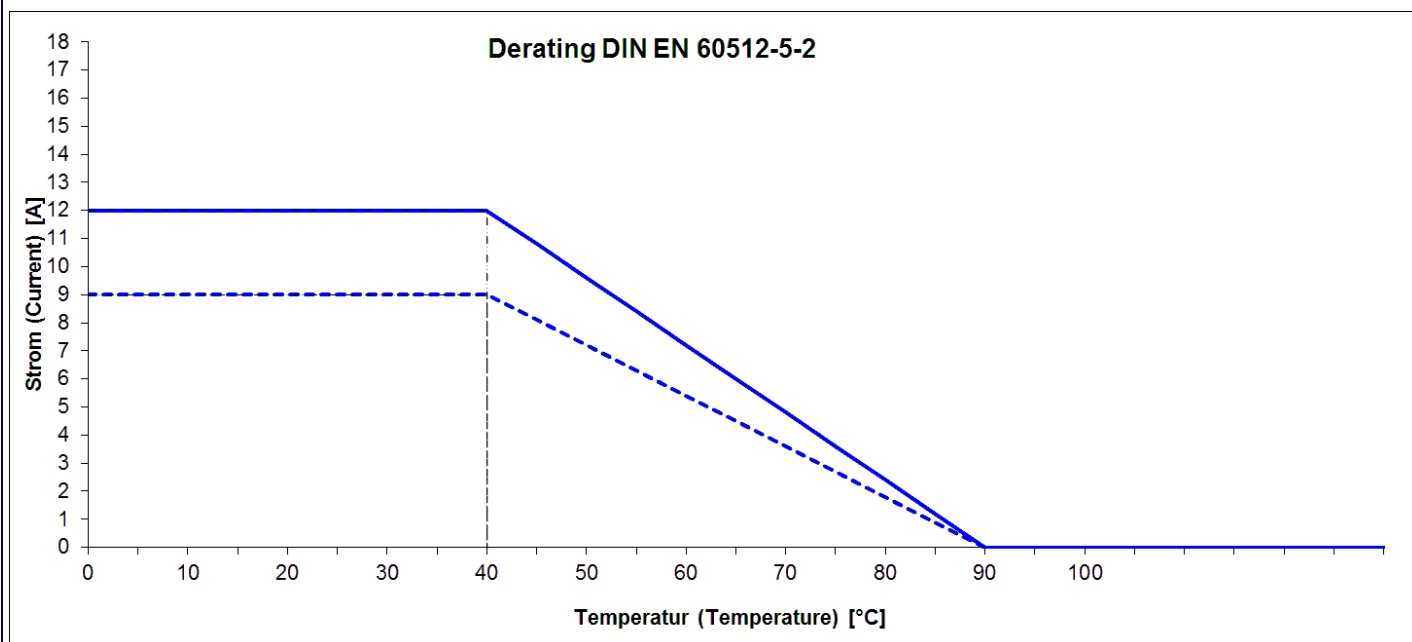
* only if mounted and locked in combination with Hirschmann / Lumberg connector.

Cutline

*a O-ring

*b pin or screwdriver as assembly tool

Do not connect or disconnect under load.



Standard products

Artikel-No.	Type
000-011-578	RSC 30/11
000-011-579	RSC 30/13,5
000-011-580	RSC 30/16
000-011-581	RSC 30/9
000-011-586	RSC 40/11
000-011-587	RSC 40/13,5
000-011-588	RSC 40/16
000-011-589	RSC 40/9
000-011-592	RSC 50/11
000-011-593	RSC 50/13,5
000-011-594	RSC 50/16
000-011-595	RSC 50/9