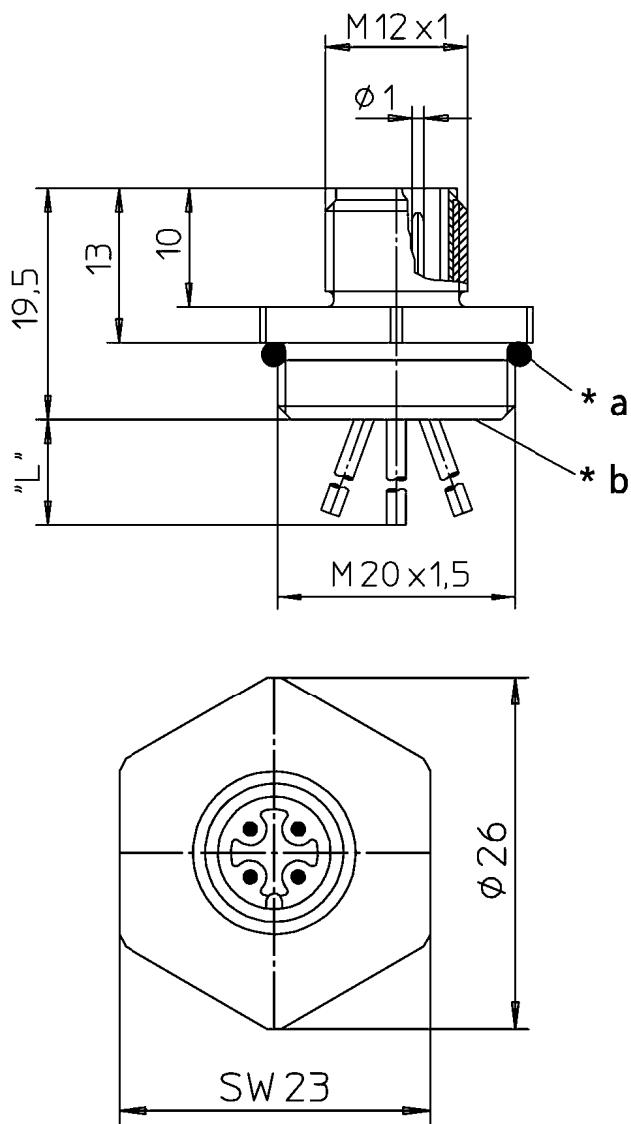


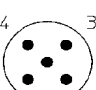



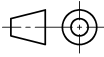
RoHS 



| Typ/ type | Kontaktbelegung/ contact assignment | |
|----------------------|--|---|
| | Polzahl/ number of poles | Farbkennung/ colour code |
| RSFM/... /20/...M |  | 1 = braun / brown |
| | | 3 = blau / blue |
| | | 4 = schwarz / black |
| | | |
| RSFM/... /20/...M |  | 1 = braun / brown |
| | | 2 = weiß / white |
| | | 3 = blau / blue |
| | | 4 = schwarz / black |
| RSFM/... /20/...M |  | 1 = braun / brown |
| | | 2 = weiß / white |
| | | 3 = blau / blue |
| | | 4 = schwarz / black |
| | | 5 = grün/gelb / green/yellow voreilend / leading |
| RSFM/... /20/...M |  | 1 = weiß / white |
| | | 2 = braun / brown |
| | | 3 = grün / green |
| | | 4 = gelb / yellow |
| | | 5 = grau / grey |
| | | 6 = rosa / pink |
| | | 7 = blau / blue |
| | | 8 = rot / red |

- *a O-Ring lose beigelegt
O-ring enclosed separately
- *b Leiteranschlussbereich vergossen
solder contacts potted with epoxy

The information/details in this datasheet merely contain general descriptions or performance factors which, when applied in an actual situation, do not always correspond with the described form, and may be amended by way of the further development of products. The desired performance factors shall only be binding if these are expressly agreed on conclusion of the contract.

DIN ISO 5456-2

Product description

receptacle connector for front mounting
FIXCON/M12
assembled stranded wire "L"
chassis side thread M20
color coding of the conductor acc. to Euro-standard

| | |
|--------------------|---|
| Type | RSFM ../20/... M, see standard products |
| Order No | see standard products |
| Type of contacts | male |
| Number of contacts | 3; 4; 5; 8, see standard products |
| Standard | IEC 61076-2-101 |
| Construction type | EM |

Technical data

| | |
|-----------------------|--|
| Operating voltage | 240 V, 3 and 4 poles 60 V, 5 poles 30 V, 8 poles |
| Rated voltage | 250 V, 3 and 4 poles 63 V, 5 poles 36 V, 8 poles |
| Rated current * | 4 A, 3 - 5 poles 1,5 A, 8 poles |
| Rated impulse voltage | 2,0 kV, 3 and 4 poles 1,5 kV, 5 and 8 poles |
| Pollution degree | 3 acc. to DIN EN 60664-1 (VDE 0110-1) |
| Contact resistance | ≤ 5 mOhm |
| Insulation resistance | > 10 ⁹ Ohm |

* Notice derating

Materials

| | |
|-----------------|----------|
| Housing | CuZn |
| Surface housing | Cu/ Ni |
| Contact bearer | PA 6/66 |
| Contact | CuZn |
| Contact plating | Cu/Au |
| O-ring | Neoprene |

Environmental conditions

| | |
|--------------------------------|---------------------------------|
| Protection class (IEC 60529) * | IP67 |
| Temperature range | -25°C to +80°C, notice derating |

Good chemical resistance.

The resistance has to be checked in individual cases.

* only if mounted and locked in combination with Hirschmann / Lumberg connector.
on the installation side tightness has to be assured by taking proper measures

Cutline

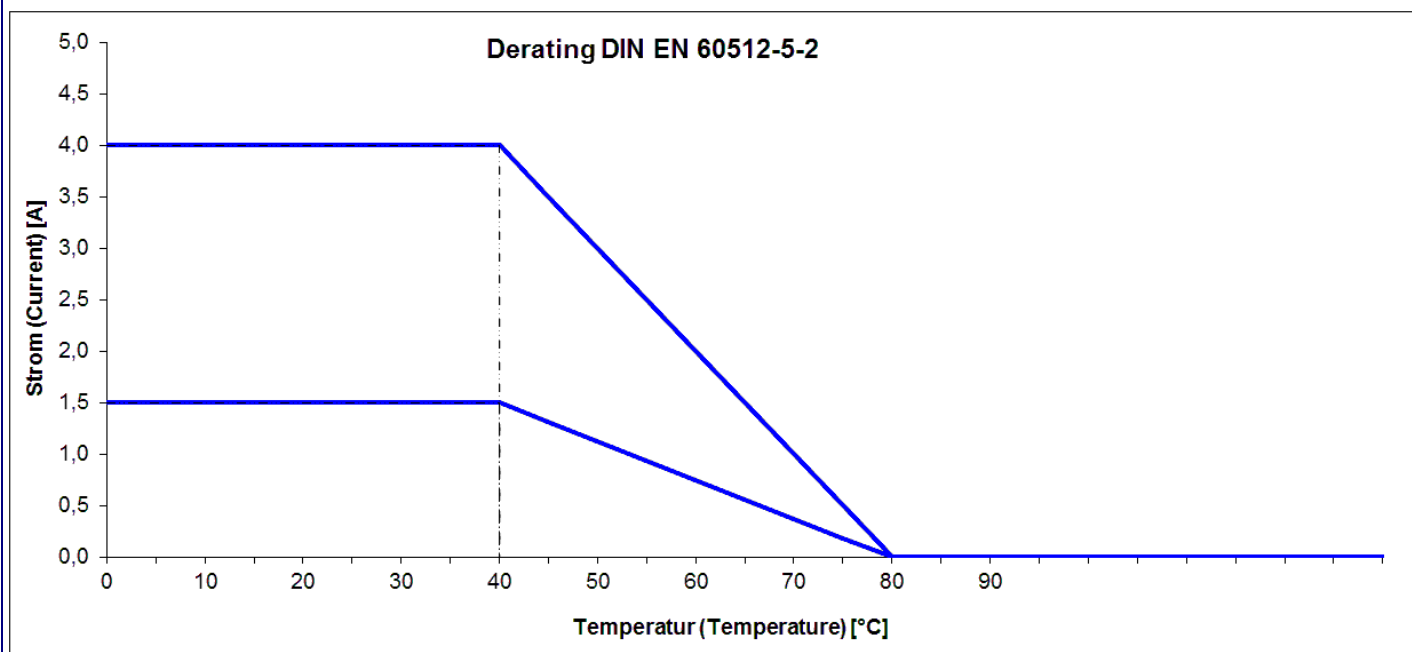
* a o-ring enclosed separately

* b solder contacts potted with epoxy

"L" = standard length of stranded wire

further technical information on stranded wires see 908...

Do not connect or disconnect under load.



Standard products

| Artikel-No. | Type |
|-------------|-----------------|
| 000-010-835 | RSFM 5/20/0,2 M |
| 000-026-143 | RSFM 3/20/0,5 M |
| 000-026-145 | RSFM 4/20/0,5 M |
| 000-026-148 | RSFM 5/20/0,5 M |
| 000-026-152 | RSFM 8/20/0,5 M |
| 000-080-492 | RSFM 4/20/0,2 M |
| 000-107-959 | RSFM 5/20/0,1 M |