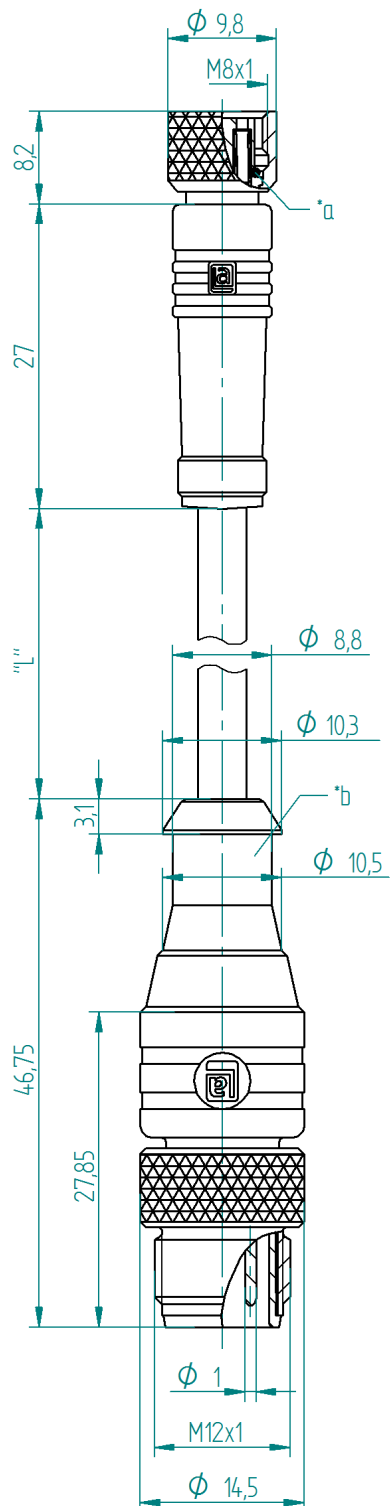
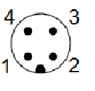

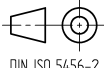


RoHS  



Typ/ type	Kontaktbelegung/ contact assignment	
	Pozahl/ number of poles	Farbkennung/ color code
RST		1 = braun / brown
		2 = weiß / white
		3 = blau / blue
		4 = schwarz / black
RKMV		1 = braun / brown
		2 = weiß / white
		3 = blau / blue
		4 = schwarz / black

The information/details in this datasheet merely contain general descriptions or performance factors which, when applied in an actual situation, do not always correspond with the described form, and may be amended by way of the further development of products. The desired performance factors shall only be binding if these are expressly agreed on conclusion of the contract.



Product description

Description	- cordset double-ended, M12 male connector and M8 female connector with self-locking threaded joint - colour coding of the conductor acc. to Euro-standard
Type	RST 4-RKMV 4-.../*M
Type of contacts	RST: male RKMV: female
Number of contacts	RST: 4 RKMV: 4
Standard	IEC 61076-2-101 / IEC 61076-2-104
Construction type	RST: LM RKMV: LF

Technical data

Rated voltage	30 V
Rated current *	4 A
Rated impulse voltage	0.8 kV
Pollution degree	3 acc. to DIN EN 60664-1 (VDE 0110-1)
Contact resistance	$\leq 5 \text{ m}\Omega$
Insulation resistance	$> 10^9 \Omega$

* Notice derating

Materials

Contact bearer	TPU, orange
over molding	TPU, translucent
Contact	RST: CuSn RKMV: CuSn
Contact plating	Cu/Au
Knurled screw	CuZn, nickel-plated
Knurled nut	CuZn, nickel-plated
O-ring	FKM

Environmental conditions

Protection class (IEC 60529) *	RST: IP67 RKMV: IP67/ IP69K
Temperature range	-25°C to +80°C, notice derating

Good chemical resistance.

The resistance has to be checked in individual cases.

* only if mounted and locked in combination with Hirschmann / Lumberg connector.

Additional technical data

Fastening torque (coupling nut)	M8x1: 30 Ncm, hand-tight
Fastening torque (coupling screw)	M12x1: 50 Ncm, hand.tight

Cutline

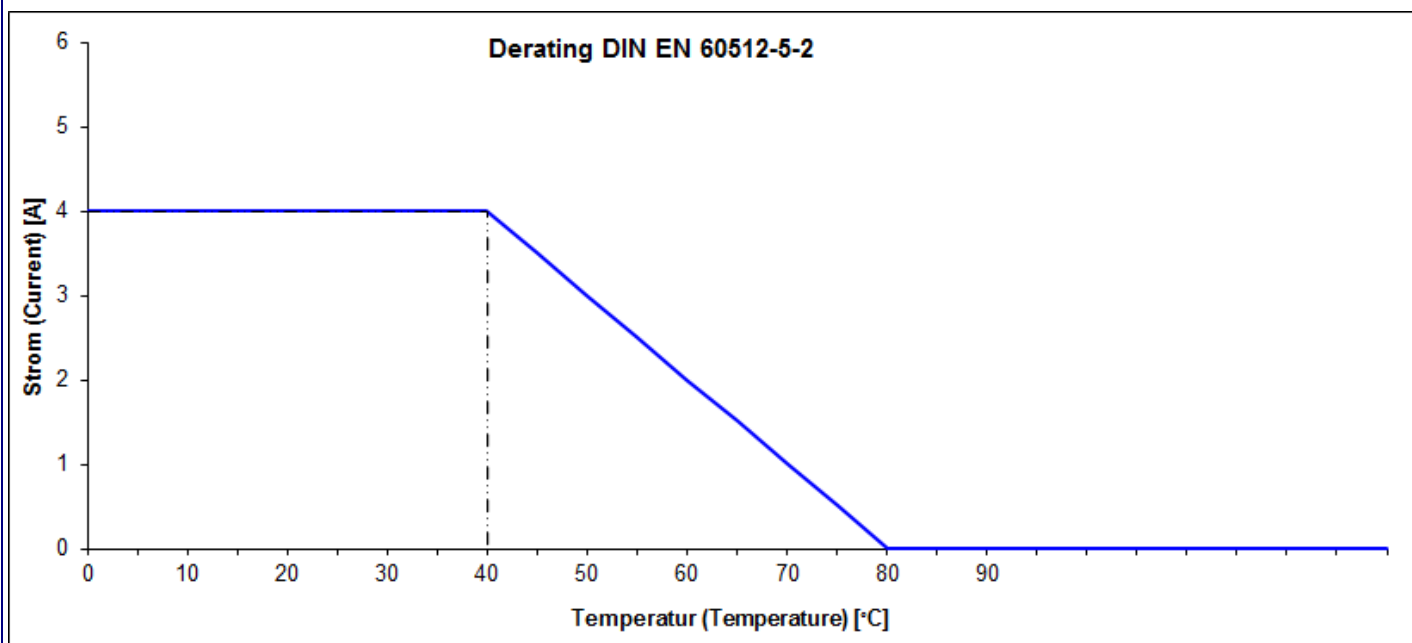
Do not connect / disconnect under load.

*a O-ring

*b hose mounting

L = length of control line

Further technical information on the control line see datasheet 909-xxx



Standard products

Artikel-No.	Type
000-000-296	RST 4-RKMV 4-251/3 M
000-004-219	RST 4-RKMV 4-295/0,5 M
000-004-223	RST 4-RKMV 4-295/1 M
000-004-235	RST 4-RKMV 4-295/2 M
000-004-265	RST 4-RKMV 4-295/1,5 M
000-004-268	RST 4-RKMV 4-295/2,5 M
000-004-276	RST 4-RKMV 4-295/2 M
000-004-313	RST 4-RKMV 4-295/3,5 M
000-004-339	RST 4-RKMV 4-295/4 M
000-004-373	RST 4-RKMV 4-295/5 M
000-005-634	RST 4-RKMV 4-225/15 M
000-014-347	RST 4-RKMV 4-251/1 M
000-014-348	RST 4-RKMV 4-251/0,6 M
000-014-349	RST 4-RKMV 4-251/0,3 M
000-017-083	RST 4-RKMV 4-265/0,3 M
000-017-084	RST 4-RKMV 4-265/0,6 M
000-017-086	RST 4-RKMV 4-265/1,5 M
000-029-622	RST 4-RKMV 4-225/2 M
000-029-623	RST 4-RKMV 4-225/5 M
000-043-943	RST 4-RKMV 4-265/3 M
000-043-945	RST 4-RKMV 4-265/2 M
000-044-031	RST 4-RKMV 4-225/1 M
000-044-078	RST 4-RKMV 4-225/0,6 M
000-044-349	RST 4-RKMV 4-225/0,3 M
000-044-442	RST 4-RKMV 4-265/5 M
000-044-609	RST 4-RKMV 4-225/1,5 M
000-045-160	RST 4-RKMV 4-225/10 M
000-045-991	RST 4-RKMV 4-225/3 M
000-051-009	RST 4-RKMV 4-07/0,6 M
000-057-328	RST 4-RKMV 4-251/2 M
000-070-608	RST 4-RKMV 4-07/2 M
000-070-609	RST 4-RKMV 4-07/5 M
000-070-610	RST 4-RKMV 4-07/10 M
000-084-695	RST 4-RKMV 4-07/1 M
000-109-391	RST 4-RKMV 4-265/1 M
934-637-494	RST 4-RKMV 4-225/20 M