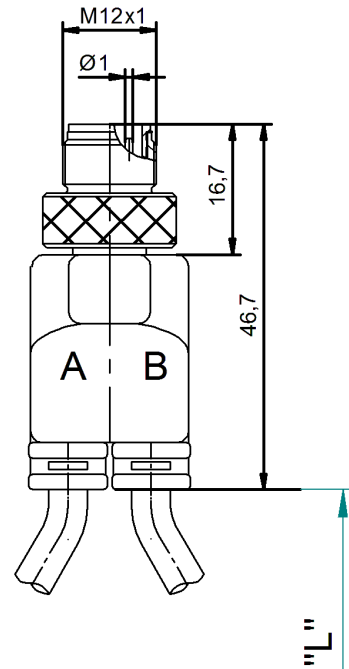
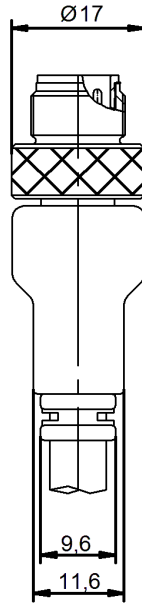
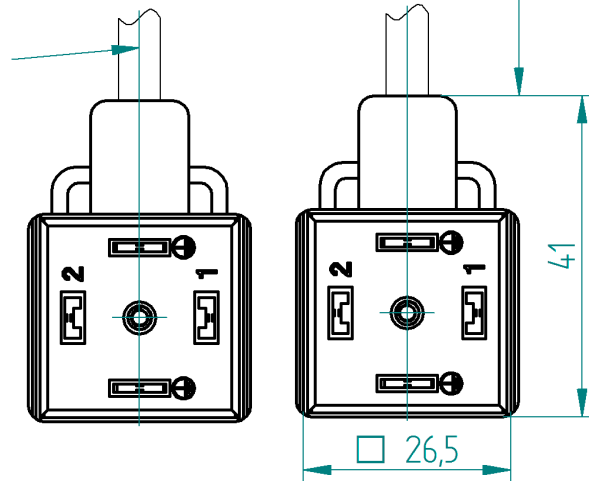
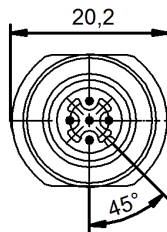


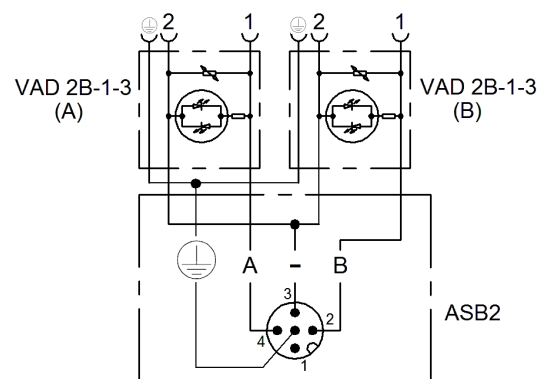
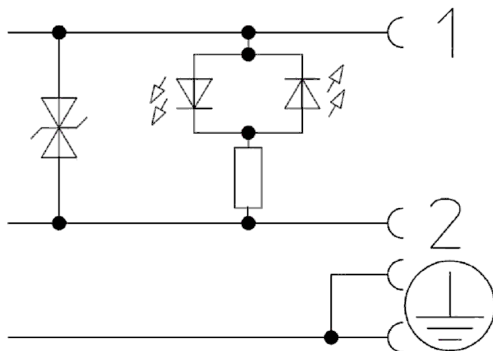
RoHS ✓



mit Schrumpfschlauch auf
Leitung A
*with heatshrink tube on
cable A*



Schaltbild / circuit diagram



The information/details in this datasheet merely contain general descriptions or performance factors which, when applied in an actual situation, do not always correspond with the described form, and may be amended by way of the further development of products. The desired performance factors shall only be binding if these are expressly agreed on conclusion of the contract.



Product description

Description	Actuator-/Sensor connection cable with two valve connectors, according to form A
Type	2x2 Marker sleeves ASB 2-VAD 2B-1-3 226/ P7

Technical data

Operating voltage	24 V
Rated voltage	32 V
Rated current *	4 A per cable / 4 A max. total; at 40 °C
Rated impulse voltage	32 V
Insulation resistance	> 10 ⁹ Ohm
Supressor diode data	
Operating voltage	47 V at 1 mA
limiting voltage	68 V at 8,9 A
Typ. Limiting voltage	60 V at 5 A
Max. pulse current (pulse shape 10/1000us)	600 W
Max. continous power loss	0,5 W LED, green

* Notice derating

Materials

ASB	
Contact plating	Ni/Au
Contact bearer	TPU
Housing	TPU
Surface coupling screw	CuZn, nickel-plated
VAD	
Housing	TPU
Contact bearer	PBT
Contact	CuZn, nickel and tin plated

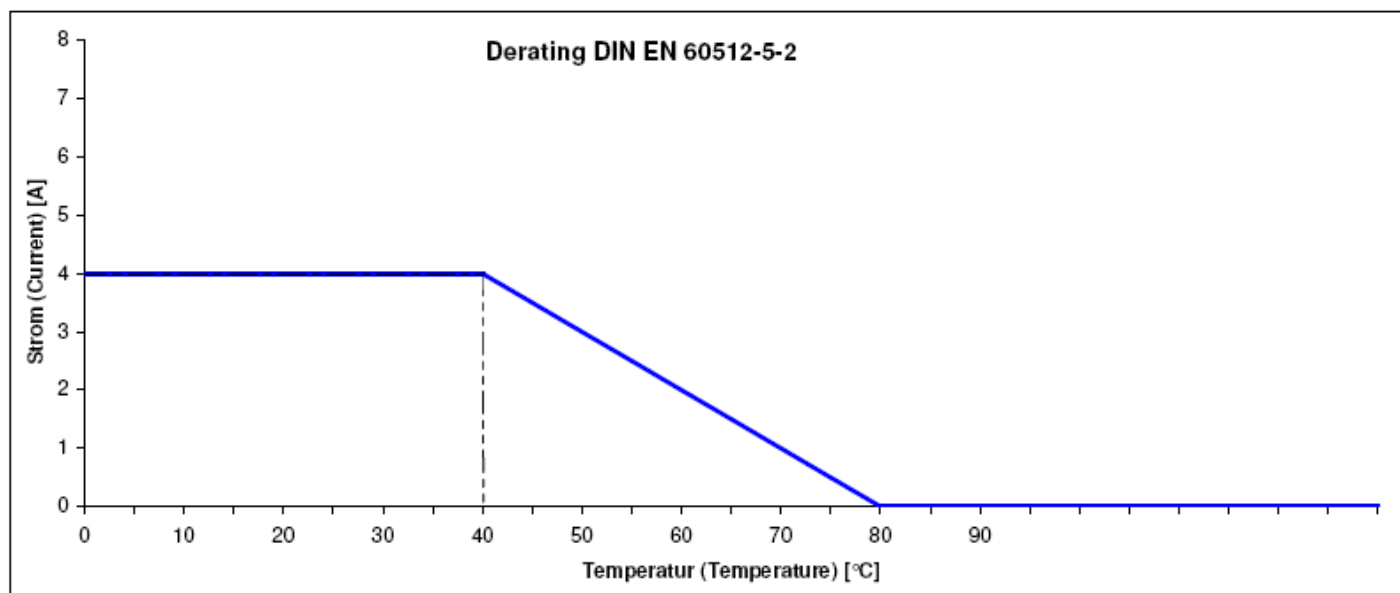
Environmental conditions

Protection class (IEC 60529) *	IP67
Pollution severity	3
Temperature range	-25 °C / +80 °C

* only if mounted and locked in combination with Hirschmann / Lumberg connector.

Cutline

Do not connect / disconnect under load.



Standard products

Artikel-No.	Type
000-051-902	ASB 2-VAD 2B-1-3-226/1 P7
000-058-656	ASB 2-VAD 2B-1-3-226/2 P7
000-090-507	ASB 2-VAD 2B-1-3-226/0,5 P7