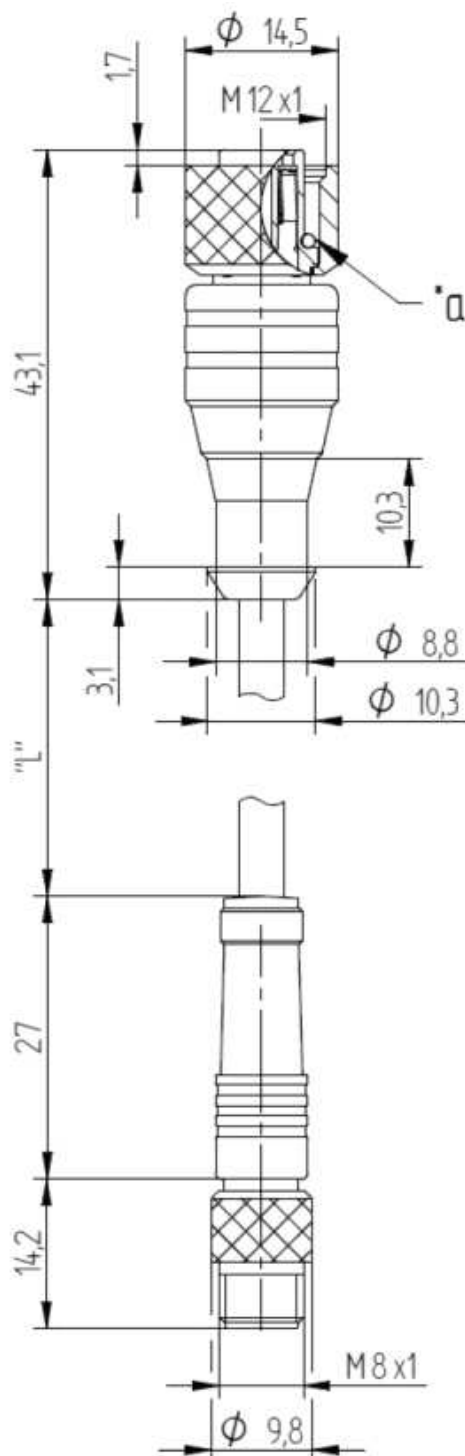
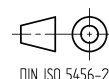


RoHS ✓ **UL**®
c US



Typ/ type	Kontaktbelegung/ contact assignment	
	Polzahl/ number of poles	Farbkennung/ colour code
RSMV		1 = braun / brown
		3 = blau / blue
		4 = schwarz / black
RKT		1 = braun / brown
		3 = blau / blue
		4 = schwarz / black

The information/details in this datasheet merely contain general descriptions or performance factors which, when applied in an actual situation, do not always correspond with the described form, and may be amended by way of the further development of products. The desired performance factors shall only be binding if these are expressly agreed on conclusion of the contract.



Datasheet-No. 935-983-179 Type: RSMV 3-RKT 4-3-.../*

EN Revision: 00 Created: 2014-02-19 1erbergheefe **cord set M8 - M12**

Page: 1 of 4

Product description

Description	- cordset double-ended, M8 connector and M12 female connector with self-locking threaded joint - colour coding of the conductor acc. to Euro-standard
Type	RSMV 3-RKT 4-3-.../*
Type of contacts	RSMV: male RKT: female
Number of contacts	RSMV: 3 RKT: 4-3, pin 2 - blind hole
Standard	IEC 61076-2-101 / IEC 61076-2-104
Construction type	RSMV: LM RKT: LF

Technical data

Rated voltage	60 V
Rated current *	4 A
Rated impulse voltage	1,5 kV
Pollution degree	3 acc. to DIN EN 60664-1 (VDE 0110-1)
Contact resistance	$\leq 5 \text{ m}\Omega$
Insulation resistance	$> 10^9 \Omega$

* Notice derating

Materials

Contact bearer over molding	TPU, orange
Contact	TPU, translucent RSMV: CuZn RKT: CuSn
Contact plating	Cu/Au
Knurled nut	CuZn, nickel-plated
Knurled screw	CuZn, nickel-plated
O-ring	FKM

Environmental conditions

Protection class (IEC 60529) *	IP66, IP67
Protection class ISO 20653 (DIN 40050-9) *	IP69K
Temperature range	-25°C to +80°C, notice Derating

Good chemical resistance.

The resistance has to be checked in individual cases.

* only if mounted and locked in combination with Hirschmann / Lumberg connector.

Additional technical data

Fastening torque (coupling screw)	M 8x1: 30 Ncm, hand-tight
Fastening torque (coupling nut)	M 12x1: 50 Ncm, hand-tight

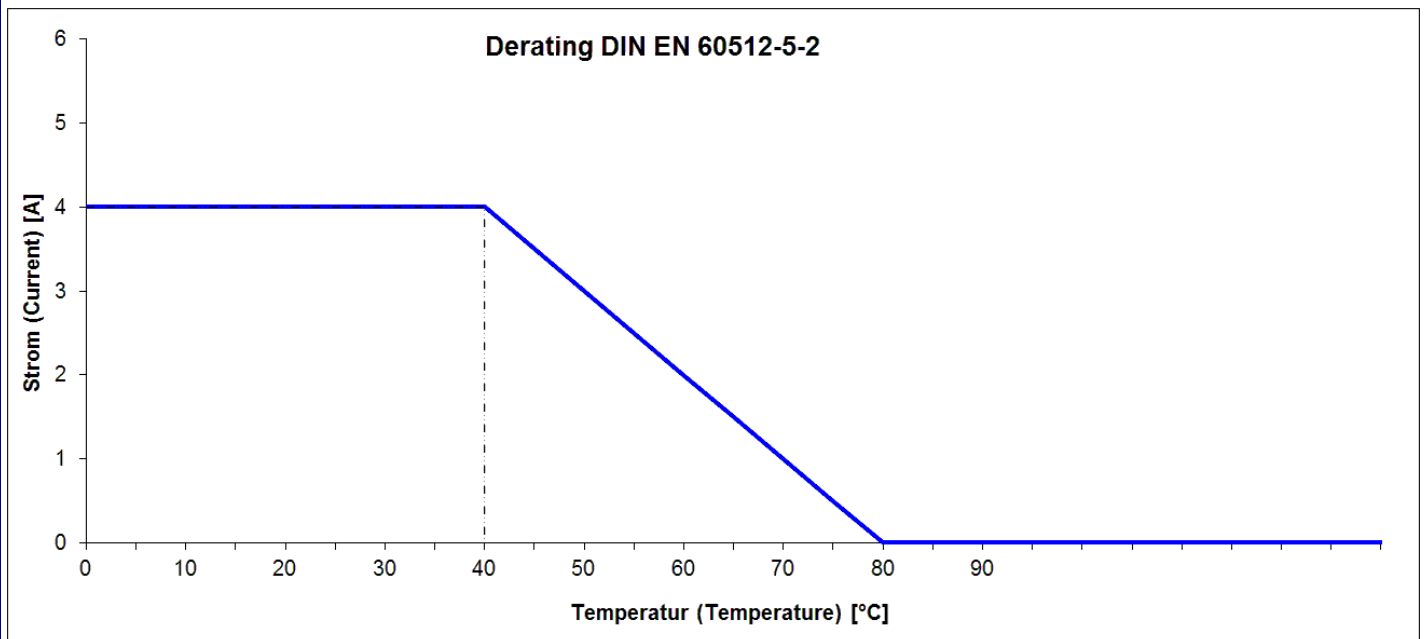
Cutline

Do not connect / disconnect under load.

*a o-ring

"L" = length of control line

Further technical data on the control line see datasheet 909



Standard products

Artikel-No.	Type
000-004-230	RSMV 3-RKT 4-3-224/6,5 M
000-004-243	RSMV 3-RKT 4-3-294/4 M
000-004-275	RSMV 3-RKT 4-3-294/6 M
000-004-282	RSMV 3-RKT 4-3-294/1,5 M
000-004-292	RSMV 3-RKT 4-3-294/2,5 M
000-004-293	RSMV 3-RKT 4-3-294/3 M
000-004-294	RSMV 3-RKT 4-3-294/5 M
000-004-328	RSMV 3-RKT 4-3-294/2 M
000-043-686	RSMV 3-RKT 4-3-224/0,3 M
000-043-687	RSMV 3-RKT 4-3-224/0,6 M
000-043-688	RSMV 3-RKT 4-3-224/1 M
000-043-689	RSMV 3-RKT 4-3-224/2 M
000-044-061	RSMV 3-RKT 4-3-224/5 M
000-046-166	RSMV 3-RKT 4-3-224/1,5 M
000-047-222	RSMV 3-RKT 4-3-224/3 M
000-048-161	RSMV 3-RKT 4-3-224/4 M
000-070-612	RSMV 3-RKT 4-3-06/5 M
000-096-877	RSMV 3-RKT 4-3-260/0,3 M
934-636-528	RSMV 3-RKT 4-3-224/10 M
934-636-713	RSMV 3-RKT 4-3-224/6 M